

- A la carte streetscape improvements:**
- Mid-block crossings
 - Pedestrian crossing islands
 - Sidewalk corner extensions (bulb-outs)
 - On-street parking
 - Street trees and edge planting
 - Raingardens

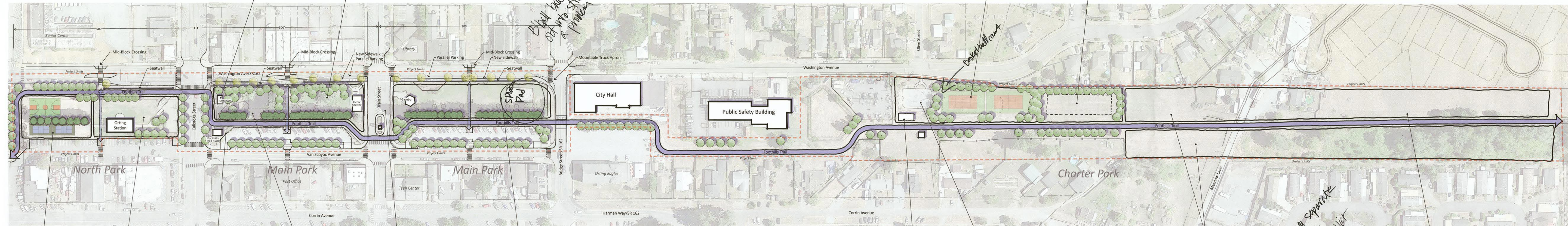
- A la carte spot improvements:**
- Circulation and ADA improvements
 - Additional seating
 - Sandstone wall retrofit
 - Separated walkway along Foothills Trail
 - Lighting
 - Wayfinding

Upgrade Restrooms

- Picnic Area
- Keep picnic shelter
- Selectively thin/open trees
- Improve: seating, circulation, ADA
- Small-scale games: table tennis, cornhole, beach volleyball?

Tennis Courts

BMX Track



Black balls out into street a problem

Basketball court

Keep play area separate from splash - too much conflict

- Sport Courts**
- Relocated basketball court
 - New pickleball courts
 - Beach Volleyball?
 - Seating, BBQ, picnic tables

- Formal Event Space**
- Bigger plaza for tents and events
 - More ornamental planting
 - Improve: seating, circulation, ADA

- Foothills Trailhead**
- Contiguous paved surface around existing kiosk
 - Improve: seating, circulation, ADA
 - Bike racks

- Playground (small and medium kids)**
- Bigger plaza for tents and events
 - Create a contiguous poured-in-place surface
 - New play equipment
 - Seamless flow between small and big kids
 - Selectively remove some fir trees for light
 - Improve: seating, circulation, ADA

- Train Street Plaza**
- Keep existing location
 - **Keep Train Street open (temporary closure for events)**
 - Inexpensive surface treatment (e.g. paint)

- Civic Green**
- Strengthen visual and physical connection to City Hall
 - Relocate basketball court to North Park
 - New street/edge trees along Washington
 - Keep Gazebo
 - Keep Foothills trail location
 - Keep (and pave) off-street parking
 - Improve seating, circulation, ADA

New Restrooms

- Existing Skate Park**
- Keep skate park and pump track near each other
 - Improve skate park
 - Improve seating, circulation, ADA

Existing Fields

- Existing Field**
- Keep existing field as-is
 - Possible dog park
 - Possible exercise stations

OTHER FEATURES
Special needs - cooking classes

- A la carte streetscape improvements:**
- Mid-block crossings
 - Pedestrian crossing islands
 - Sidewalk corner extensions (bulb-outs)
 - On-street parking
 - Street trees and edge planting
 - Raingardens

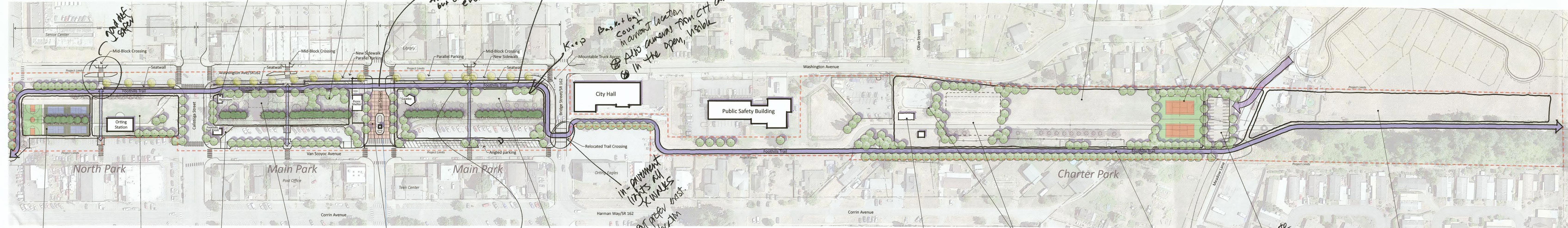
- A la carte spot improvements:**
- Circulation and ADA improvements
 - Additional seating
 - Sandstone wall retrofit
 - Separated walkway along Foothills Trail
 - Lighting
 - Wayfinding

Upgrade Restrooms

- Splash Pad**
- Selectively thin/open trees
 - Improve: seating, circulation, ADA
 - Improve flow between play area and plaza

Multi-Purpose Playfield

New Tennis Courts



- Sport Courts**
- New basketball court
 - New pickleball courts
 - Selectively remove cedars
 - Seating, BBQ, picnic tables

- Event Space**
- Improved space for events and tents
 - More ornamental planting

- Foothills Trailhead**
- Keep off-street parking in this block
 - Bike racks

- Playground**
- Expanded playground area
 - Contiguous poured-in-place surface
 - New play equipment
 - Seamless flow between small and big kids
 - Selectively remove some trees
 - Improve: seating, circulation, ADA

- Train Street Plaza**
- Design Train Street as a flexible shared space
 - Unit pavers/concrete surface treatment

- Civic Green**
- Informal grass area
 - Strengthen visual and physical connection to City Hall
 - Relocate off-street parking to Van Scoyoc Avenue (angled parking)
 - Relocate Foothills Trail to Van Scoyoc Avenue
 - Selectively thin some fir trees
 - Move basketball court to North Park
 - New street/edge trees along Washington

- New Restrooms**

- Skate Park + Pump Track (big kids)**
- Keep skate park and pump track together
 - Improve skate park and pump track (asphalt surface?)
 - Create small plaza/shelter between the two for hanging out

- Realigned Foothills Trail**

- Potential New Parking**
- New parking lot accessed from Meadow Lane
 - Can function as a second trailhead
 - Possible location for new restrooms

- Existing Field**
- Keep existing field as-is
 - Possible dog park
 - Possible exercise stations

Orting Main Parks Master Plan

Alternative B

