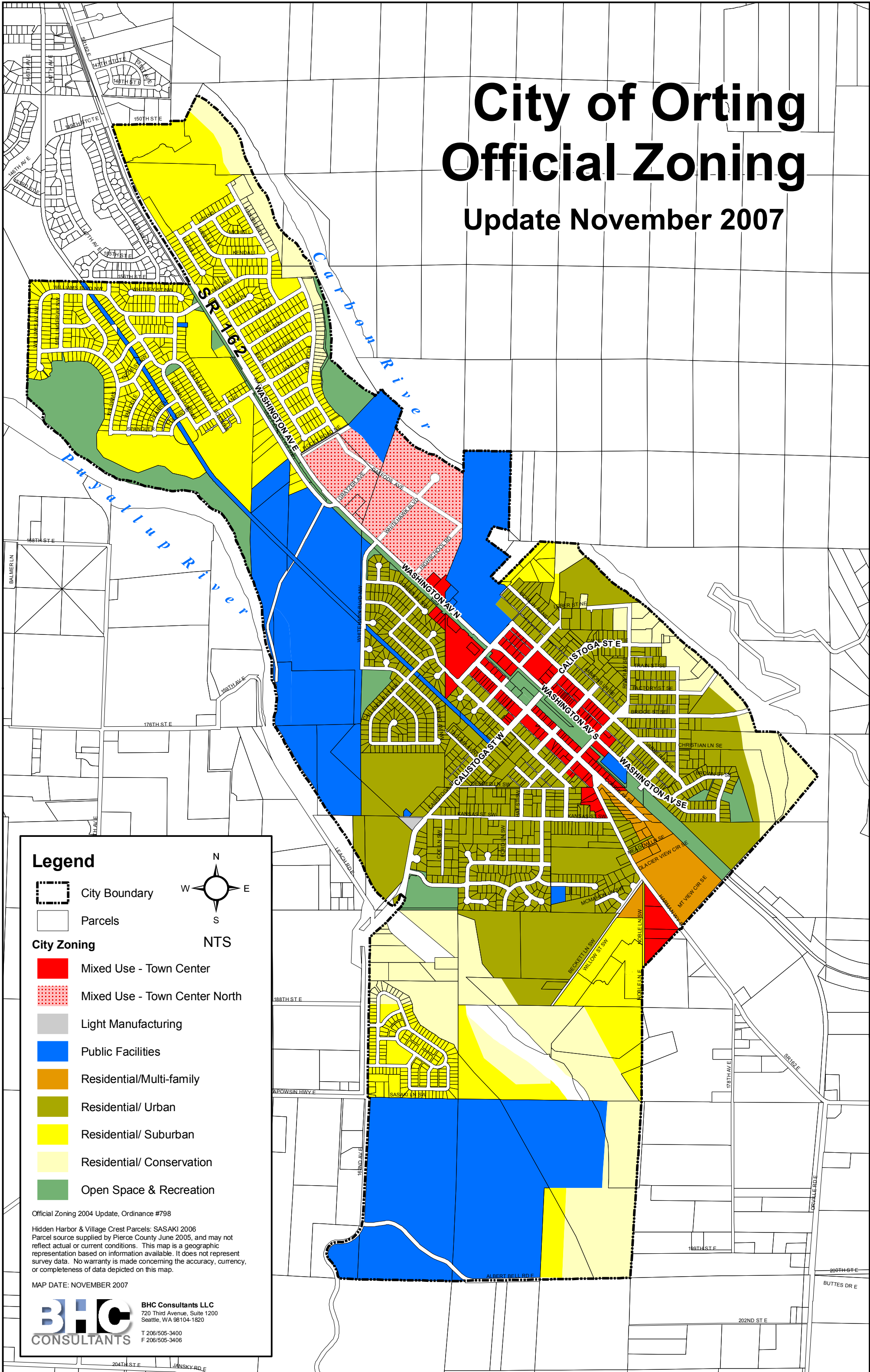


City of Orting Official Zoning

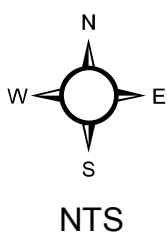
Update November 2007



Legend

City Boundary

Parcels



City Zoning

Mixed Use - Town Center

Mixed Use - Town Center North

Light Manufacturing

Public Facilities

Residential/Multi-family

Residential/ Urban

Residential/ Suburban

Residential/ Conservation

Open Space & Recreation

Official Zoning 2004 Update, Ordinance #798

Hidden Harbor & Village Crest Parcels: SASAKI 2006
Parcel source supplied by Pierce County June 2005, and may not reflect actual or current conditions. This map is a geographic representation based on information available. It does not represent survey data. No warranty is made concerning the accuracy, currency, or completeness of data depicted on this map.

MAP DATE: NOVEMBER 2007



BHC Consultants LLC
720 Third Avenue, Suite 1200
Seattle, WA 98104-1820

T 206/505-3400
F 206/505-3406