




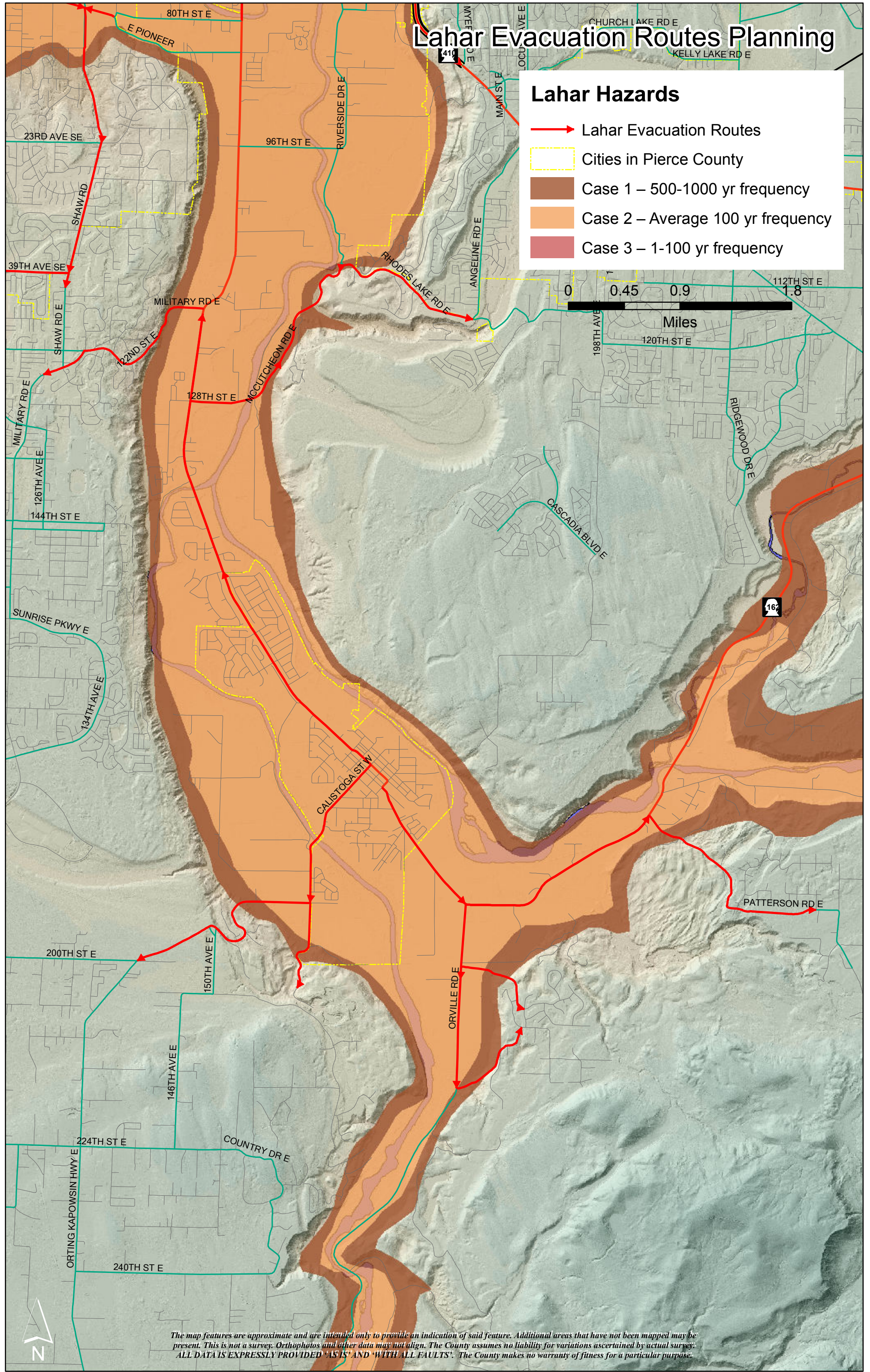
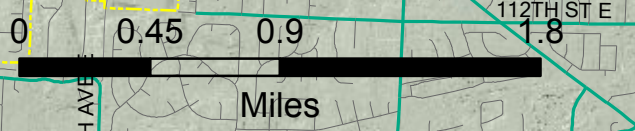


Lahar Evacuation Routes Planning

Lahar Hazards

-  Lahar Evacuation Routes
-  Cities in Pierce County
-  Case 1 – 500-1000 yr frequency
-  Case 2 – Average 100 yr frequency
-  Case 3 – 1-100 yr frequency



The map features are approximate and are intended only to provide an indication of said feature. Additional areas that have not been mapped may be present. This is not a survey. Orthophotos and other data may not align. The County assumes no liability for variations ascertained by actual survey. ALL DATA IS EXPRESSLY PROVIDED 'AS IS' AND 'WITH ALL FAULTS'. The County makes no warranty of fitness for a particular purpose.